



Critical Issues in Partnerships for Agricultural Research & Development in Ethiopia

Tsedeke Abate, Founder & Leader
Homegrown Vision

tsedeke@homegrownvision.org

Website: www.homegrownvision.org

Addis Ababa, Ethiopia

Presented at the 9th Annual Science Conference of Bahr Dar University

“Collaborative Scientific Research for Solving Current Challenges”

21-22 May 2021

Outline

- Background “discover your country” (#3-8)
- Experiences with partnerships (#9)
- Outstanding issues (#10)
- Stories from maize and grain legumes (#11-14)
- What are the lessons? (#15)
- Looking ahead (#16)

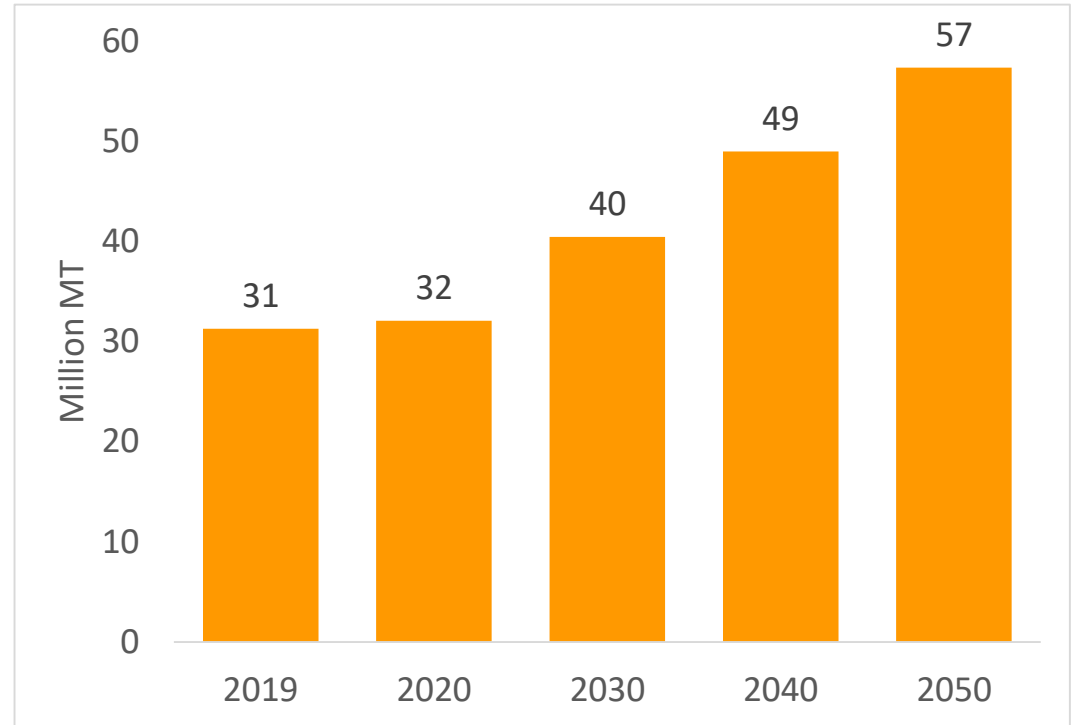
Ethiopian Population

Year	Total pop	Growth rate (%)	Urban (%)
1950	19	-	5
2000	66	2.67	15
2050	205	2.46	36

How do you feed, shelter, provide amenities while preserving your natural environment, in a **sustainable manner**?

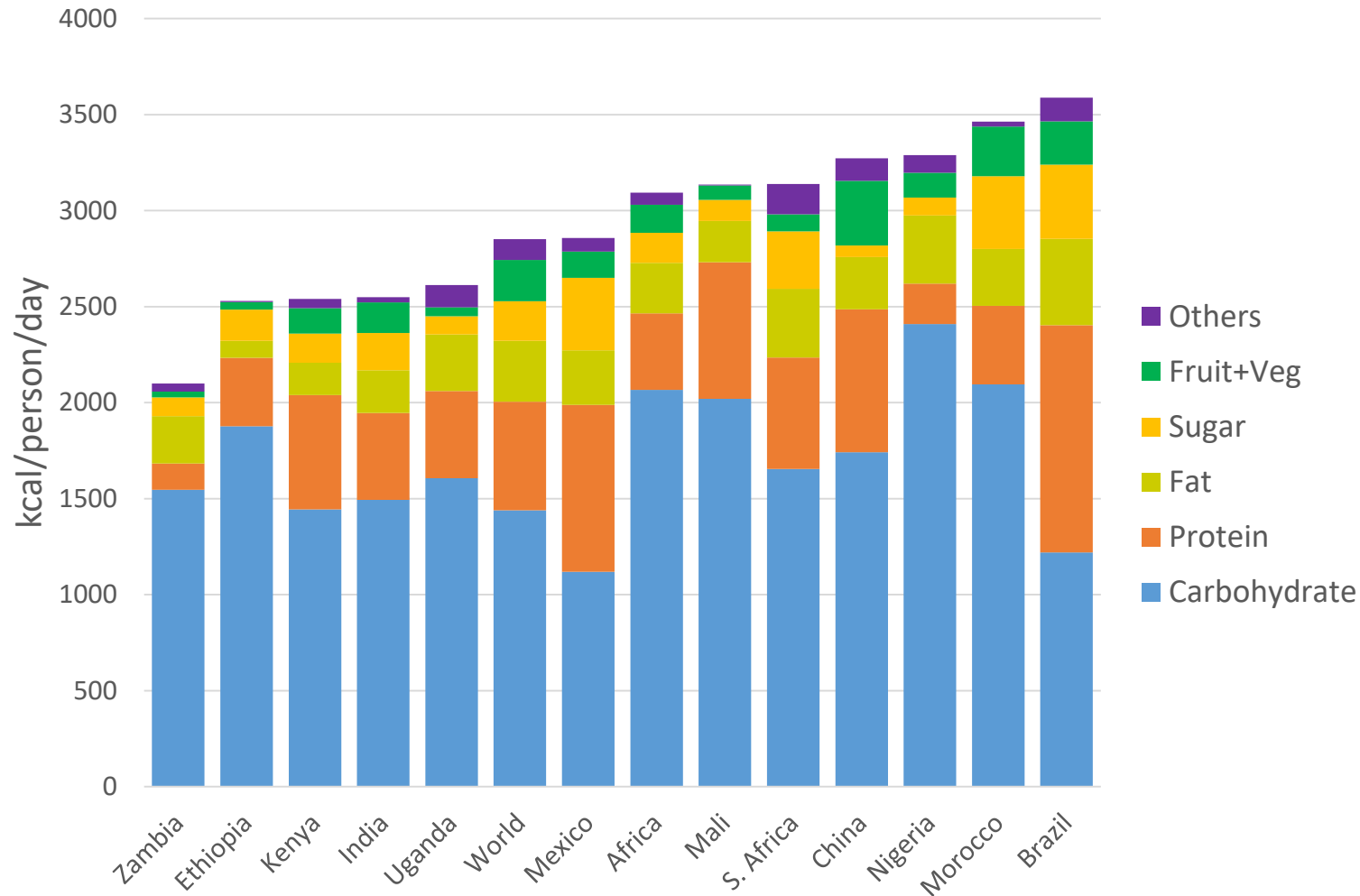
Minimum Requirements – Major Cereals

2019 data				
Commodity	Production (000 MT)	Import (000 MT)	Total	% Import
Maize	9,636	26	9,662	<1
Wheat	5,315	1,306	6,621	25
Teff	5,736	NA	5,736	0
Sorghum	5,266	250	5,516	5
Barley	2,378	16	2,394	1
Millet	1,126	0	1,126	<1
Rice	171	NA	171	0
Emmer	46	0	46	<1
Total	29,674	1,598	31,272	5



- Produced ~30 million MT
- Imported ~1.6 million MT grain, @US\$ 610 million
- Production needs to be doubled by 2050
- How do we get there?
- Are there different pathways?

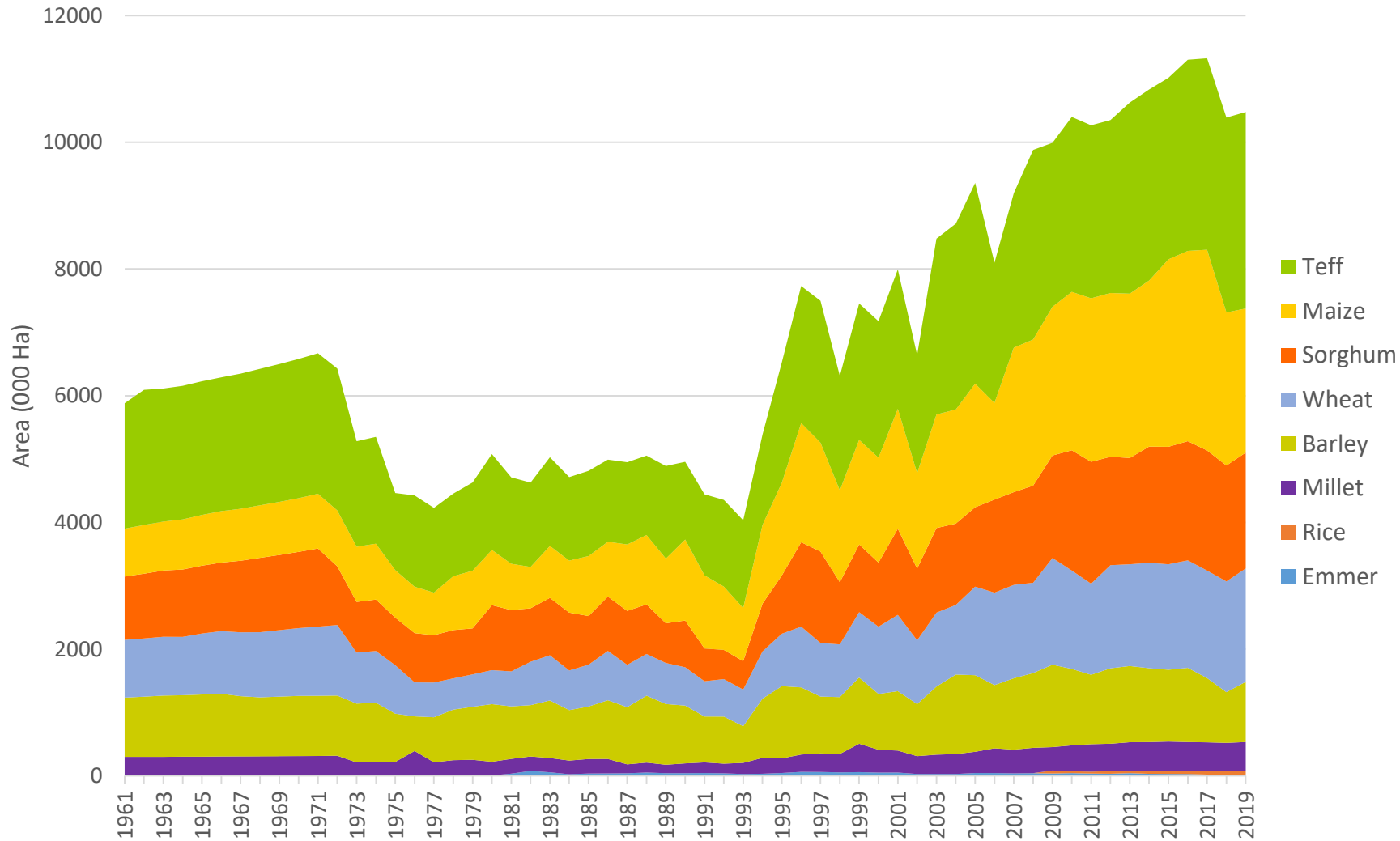
Composition of dietary energy supply in Ethiopia, compared to selected countries/regions (2009-13 avg.)



Ethiopia achieved WHO minimum requirement, but:

- Carbohydrate-dominated
- Low in fat, protein, minerals, vitamins
- Less diverse

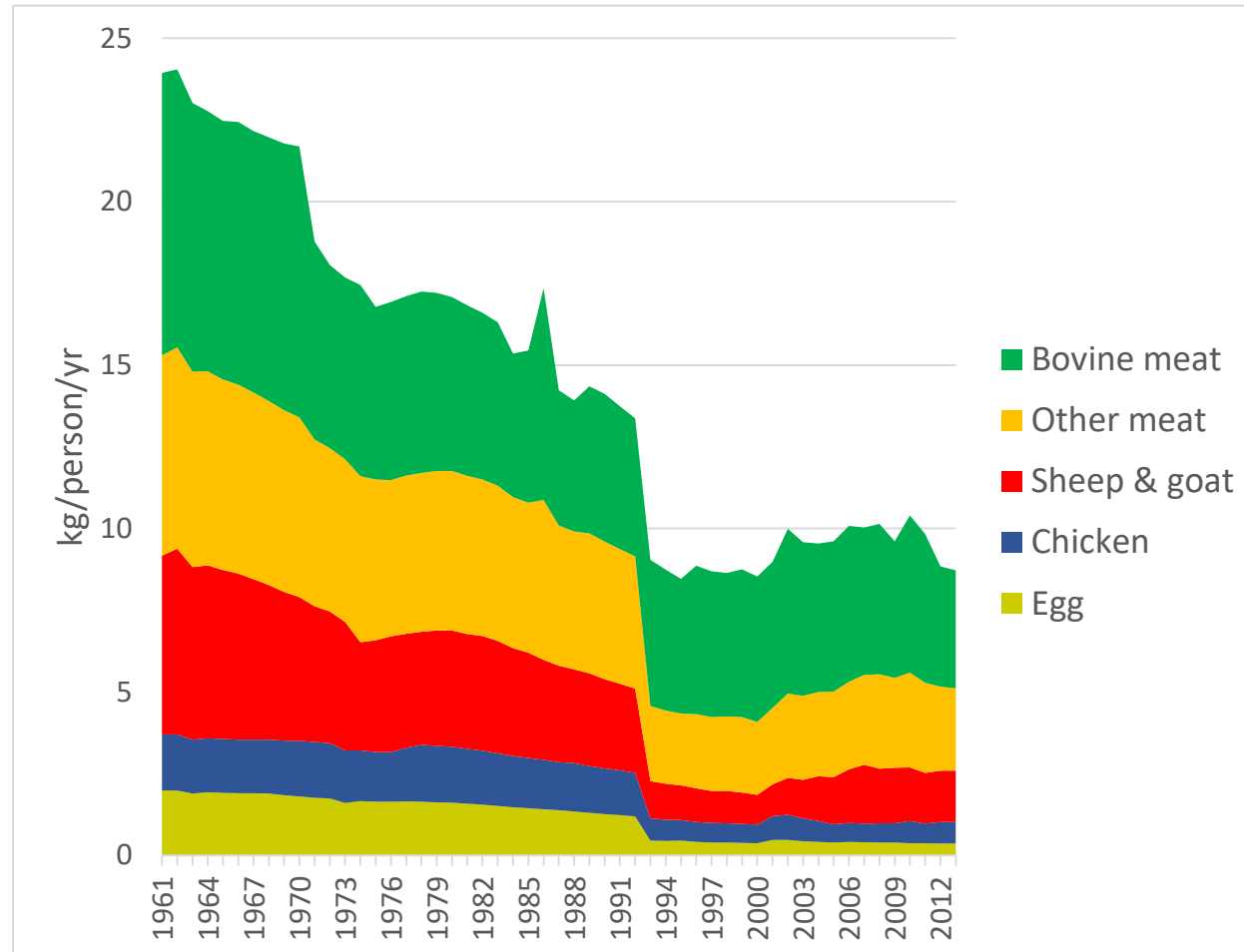
Area Occupied by Major Cereals in Ethiopia



- Fast area expansion over the last three decades (with obvious implications);
- Further expansion limited

Source: Constructed by the author from FAOSTAT (accessed 22 Jan 2021)

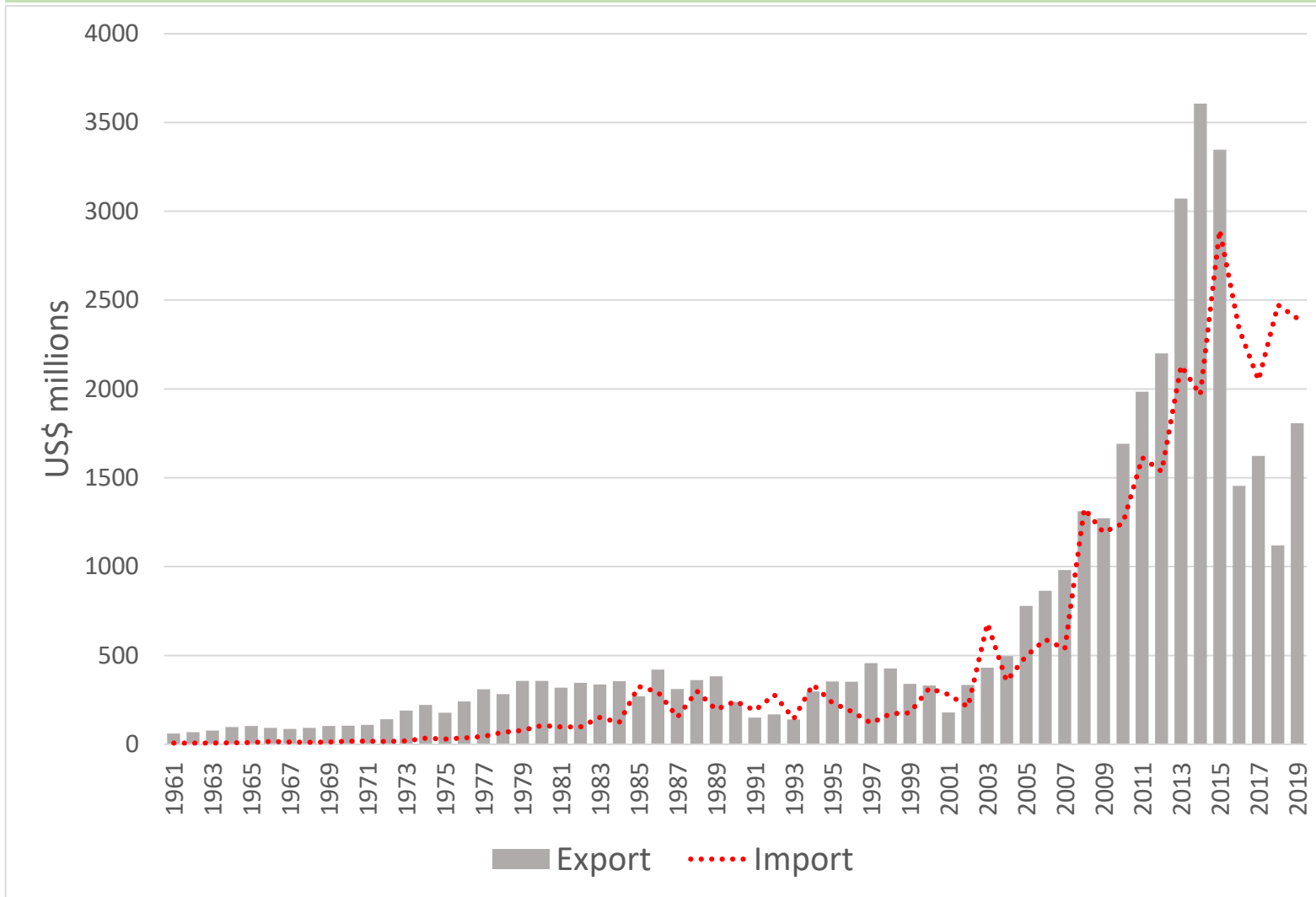
Per capita consumption of selected livestock products(1961-2013)



Continued decline over the years

- Decline/stagnation in productivity
- Rapid growth in population

Agricultural export and import values in Ethiopia



Export
 2014: US\$ 3.6 billion
 2019: US\$ 1.8 billion
50% decline

Import
 Persistently higher than export since 2016
Ethiopia net importer of food

Source: Constructed by the author from FAOSTAT (accessed 25 March 2021)

Types and Experiences with Partnerships

- Internal

- Research institutes
 - Federal
 - Regional
- Universities
 - Government
 - Private

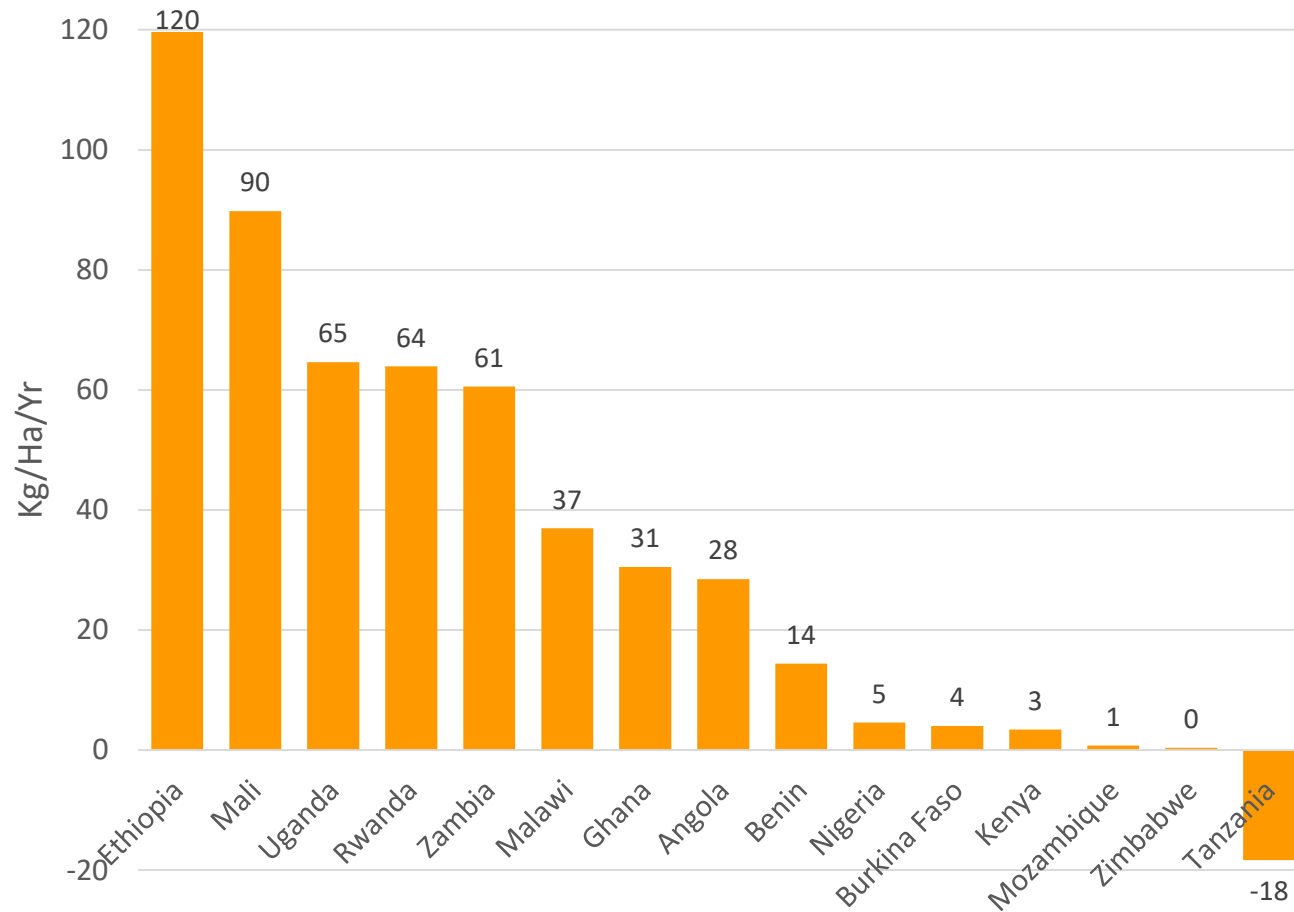
- External

- CG centers
- Universities
- Foundations
- Bilateral

Outstanding Issues

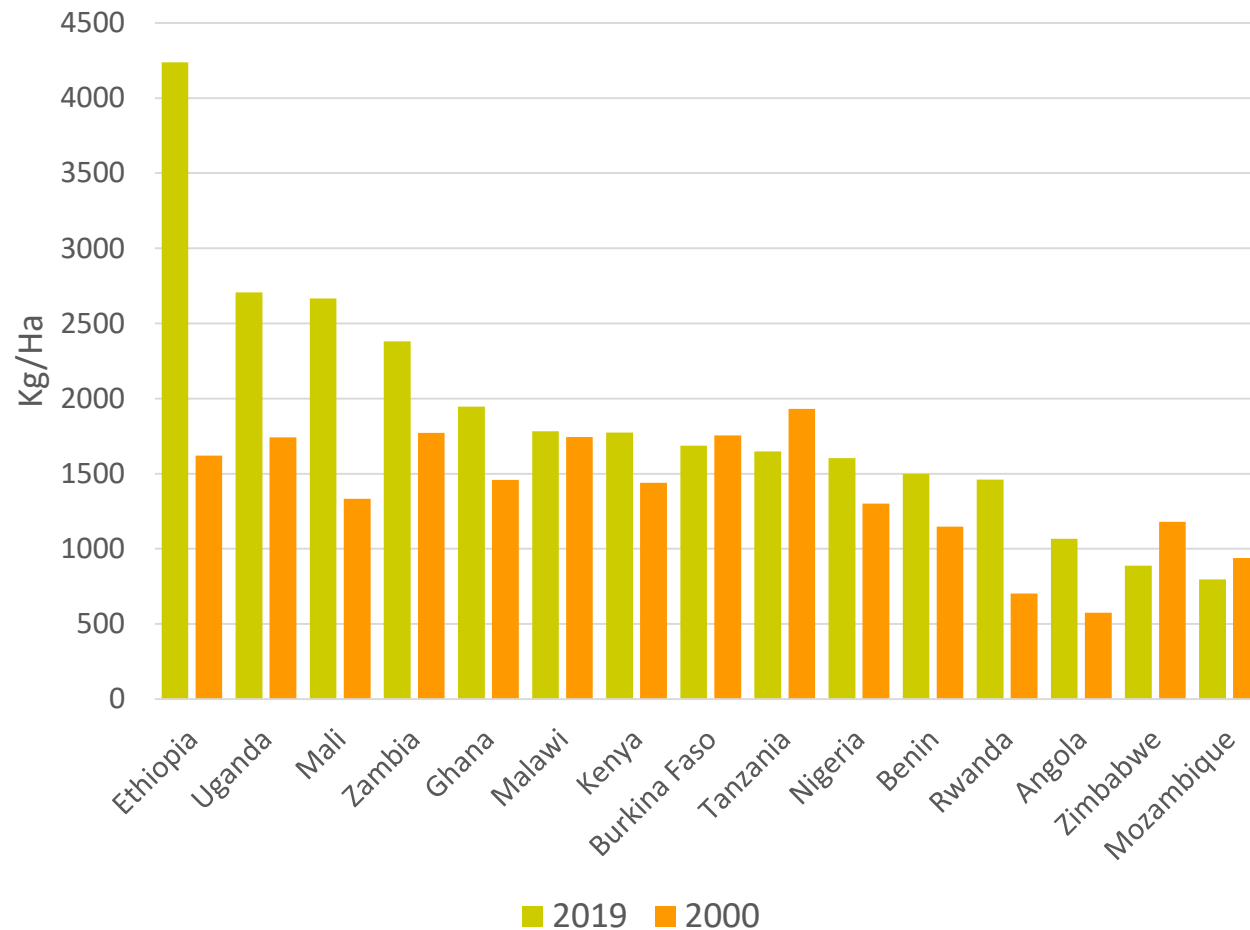
- Internal
 - Decentralization of research system in the 1990s not based on sound scientific justification
 - Loss of national vision
 - Compromised efficiency/quality
 - Absence of strong nationally coordinating body
 - NARC not fully functional
- External
 - Mostly donor-driven
 - Non-inclusive priorities
 - Indigenous systems overlooked
 - Inequitable (NARS only junior partners)
 - Has not lived up to expectations
 - Has not built bargaining power

Yield gain for maize in AGRA/DTMA countries (2000-19)



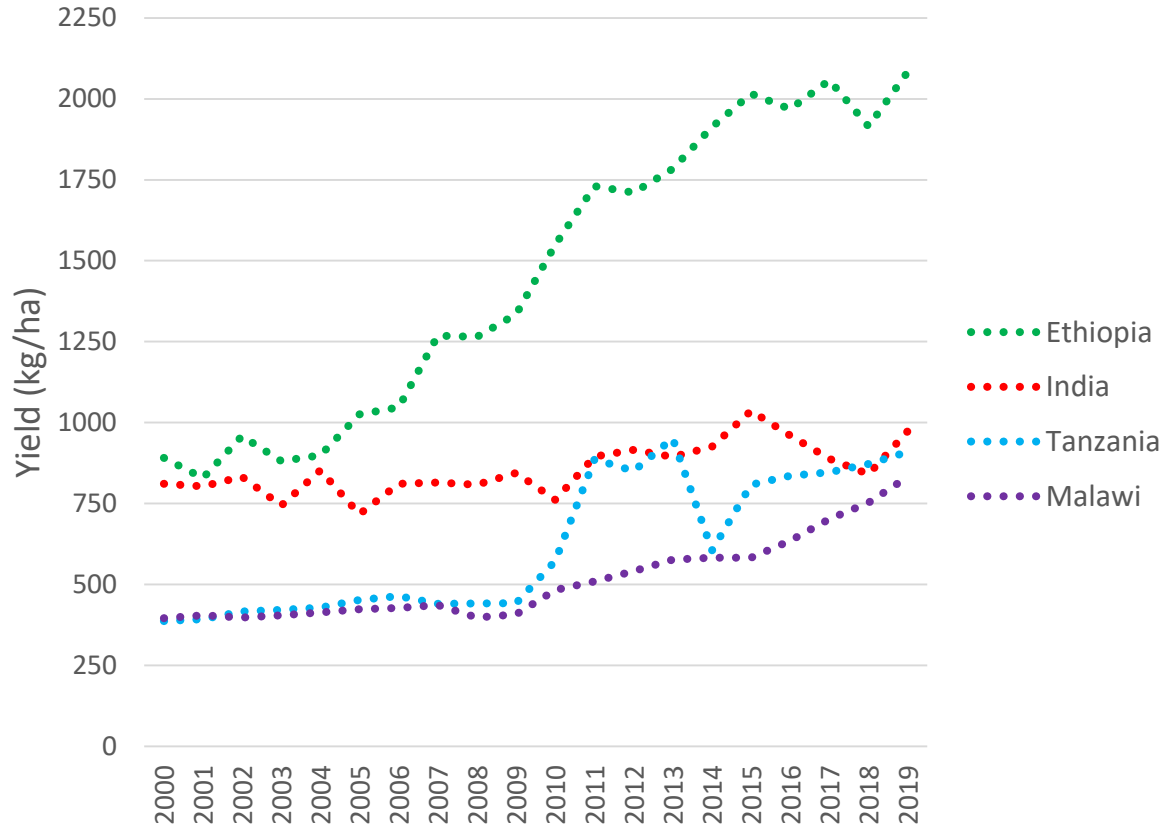
- Variation from country to country
 - Substantial: Ethiopia, Mali
 - Modest: Uganda, Rwanda, Zambia
 - Marginal: Malawi, Ghana, Angola
 - Stagnant: Benin, Nigeria, Burkina Faso, Kenya
 - Declining: Tanzania, Zimbabwe, Mozambique

Maize yield in AGRA/DTMA countries



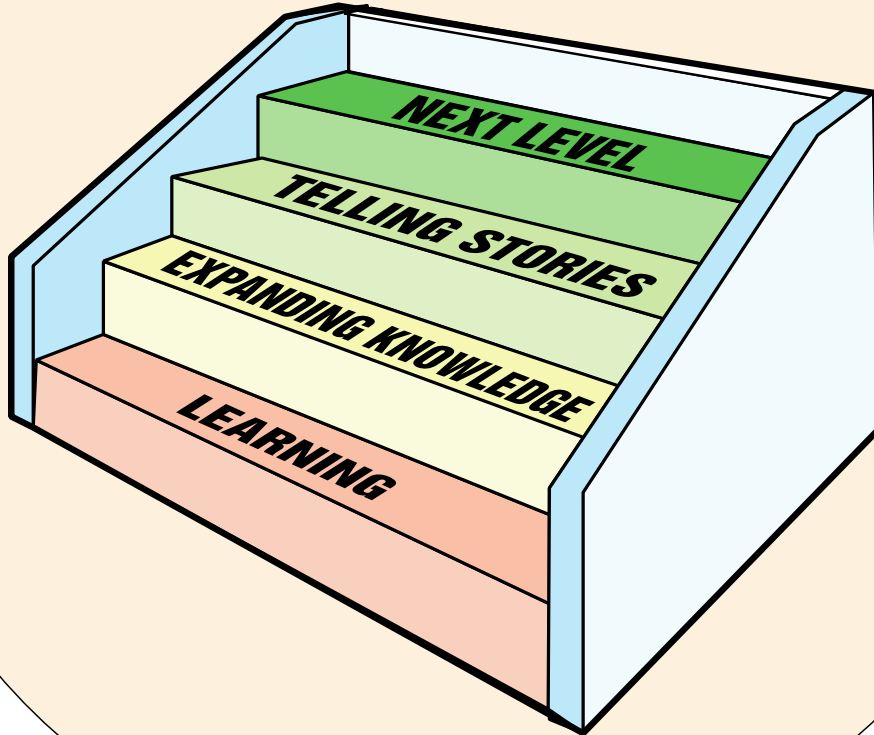
- Only Ethiopia >4 MT/Ha
- Majority of Africa <2 MT/Ha
- Only Ethiopia & Mali doubled in the 20 years

Performance of chickpea in TL-II countries (2000-19)



Country	Yield gain	P-value	R-square
Ethiopia	76	***	0.95
Tanzania	32	***	0.76
Malawi	25	***	0.90
India	13	***	0.62

My personal approach to development projects



- Ethiopian system stands out among its peers in Africa
 - Not donor-driven
 - Continued support from successive political systems
 - Followed a homegrown approach
- Needs a 'refresher course' as we move forward to address the needs of the 21st century



What are the Lessons?

- Development cannot be outsourced and no shortcuts to that destination
 - Investment
 - Institutions
 - Inputs

Looking Ahead

- Internal
 - Optimize national coordination
 - National dialogue and consensus
 - Top-down not sustainable
- External
 - Negotiate a new deal (current model has not delivered desired results)
 - Strengthen bargaining power
 - Rely on homegrown vision
 - Do your homework first

አመሰግናለሁ/Thank You

ለውጥ ማምጣት እንፈልጋለን
ማምጣትም አለብን
እንደምንችልም እናውቃለን

We want to make it happen
We should make it happen
And we know we can